



Fletsand Road, Wilmslow
Wilmslow, SK9 2AD

£26,000 PCM

- Stunning Modern Property
- Five reception rooms
- Six Bedrooms all with en-suite bathrooms
- Triple Garage
- Approx 10,000 sq ft with annex
- Close to town centre
- Open Plan Kitchen/Dining Area
- Games Room
- Secure Gated Driveway
- Furnished

PROPERTY SUMMARY

A stunning modern gated property which is located on one of Wilmslows most desirable private roads. A short walk to Wilmslow train station and town centre. This approx 10,000 sq ft home with annex is a high specification and offers exceptionally spacious and airy accommodation. Comprising: GF: impressive galleried entrance hall with stunning chandelier above; large open plan kitchen/ breakfast room, living room; dining room; sitting room; media room; gym; WC; utility room; office; door to 2nd kitchen, leading to Annex/ 7th bedroom. 1st Floor: galleried landing; spacious master suite with dressing room and large en-suite; two further large double bedrooms both with dressing rooms and en-suites; further double with en-suite; laundry room. 2nd Floor: two en-suite bedrooms with dressing rooms; games room/ Sitting room. Externally you will find electric gates opening to spacious parking area; access to triple integral garage; rear patio and garden. Council Tax Band H

7



7

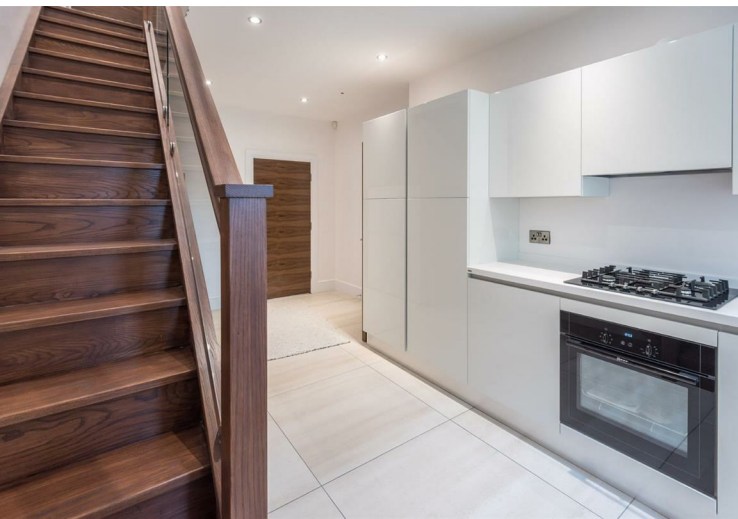


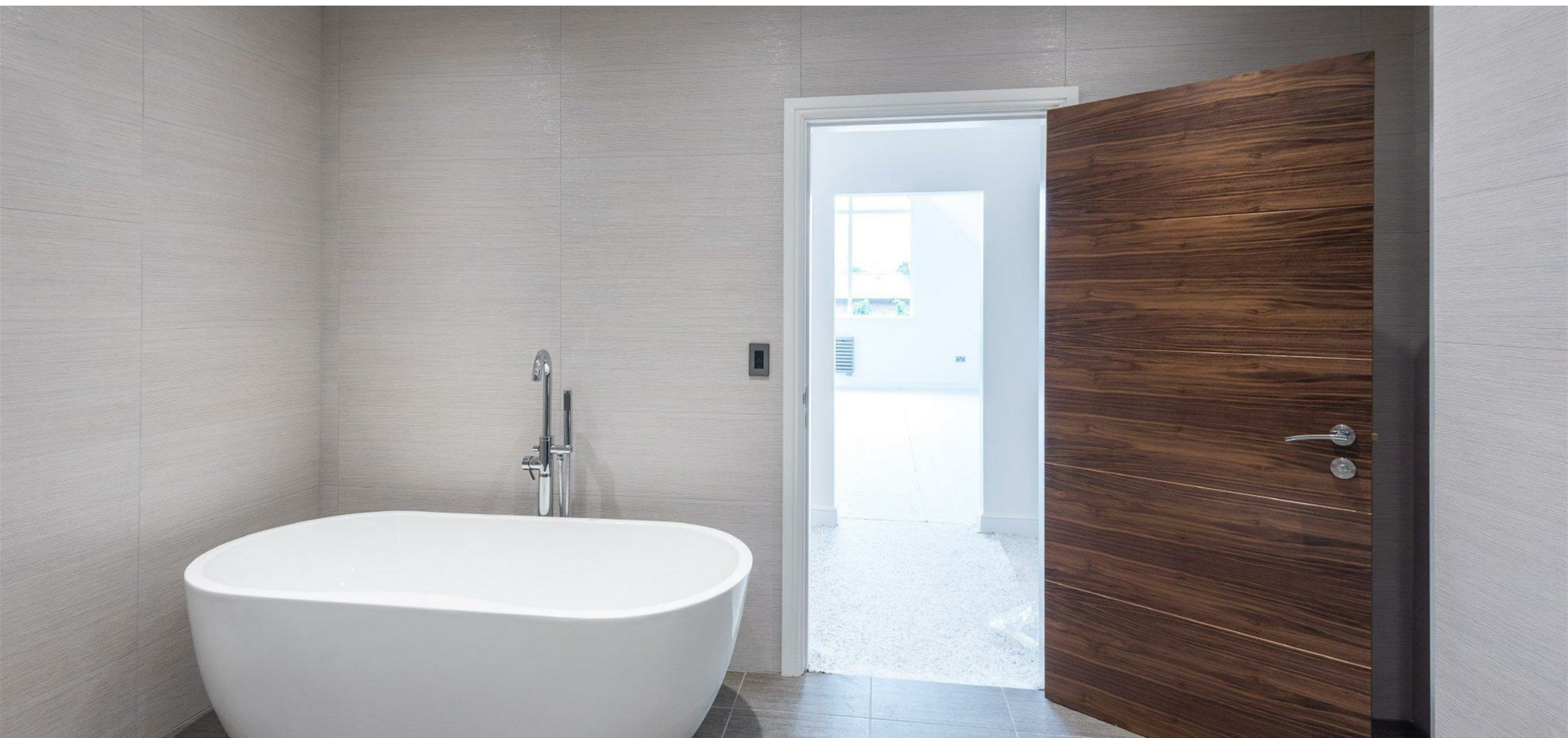
5

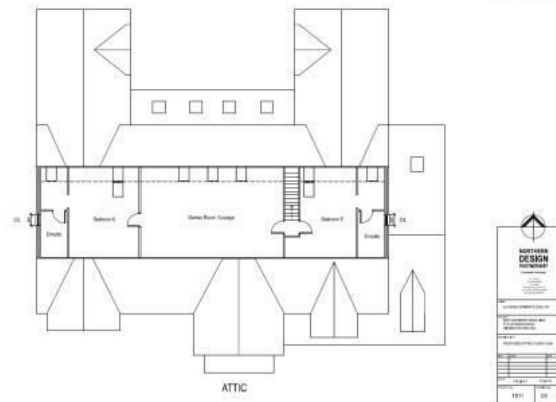
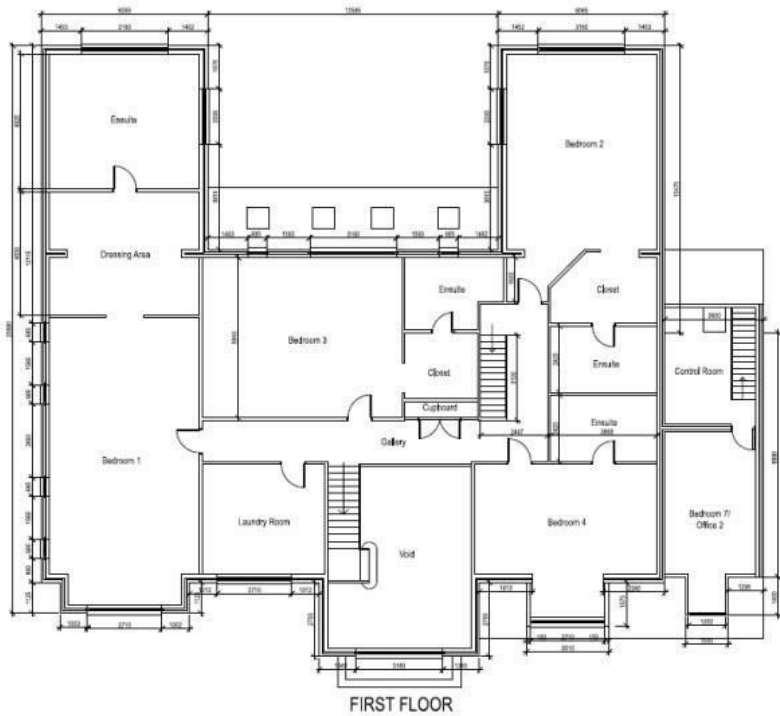












Council Tax Band:
Tax Band H

Tenure:

Local Authority:
Cheshire East Council

Energy Efficiency Rating		
	Current	Potential
Very energy efficient - lower running costs		
(92 plus) A		
(81-91) B	87	88
(69-80) C		
(55-68) D		
(39-54) E		
(21-38) F		
(1-20) G		
Not energy efficient - higher running costs		
England & Wales	EU Directive 2002/91/EC	

Agents Note: Whilst every care has been taken to prepare these sales particulars, they are for guidance purposes only. All measurements are approximate and for general guidance purposes only and whilst every care has been taken to ensure their accuracy, they should not be relied upon and potential buyers are advised to recheck the measurements.



Cheshire Office:
Blackbox
Beech Lane
Wilmslow
Cheshire SK9 5ER

Email:
sales@bensohbunch.co.uk

Telephone:
01625 523605

Website:
<https://www.bensonbunch.co.uk>